

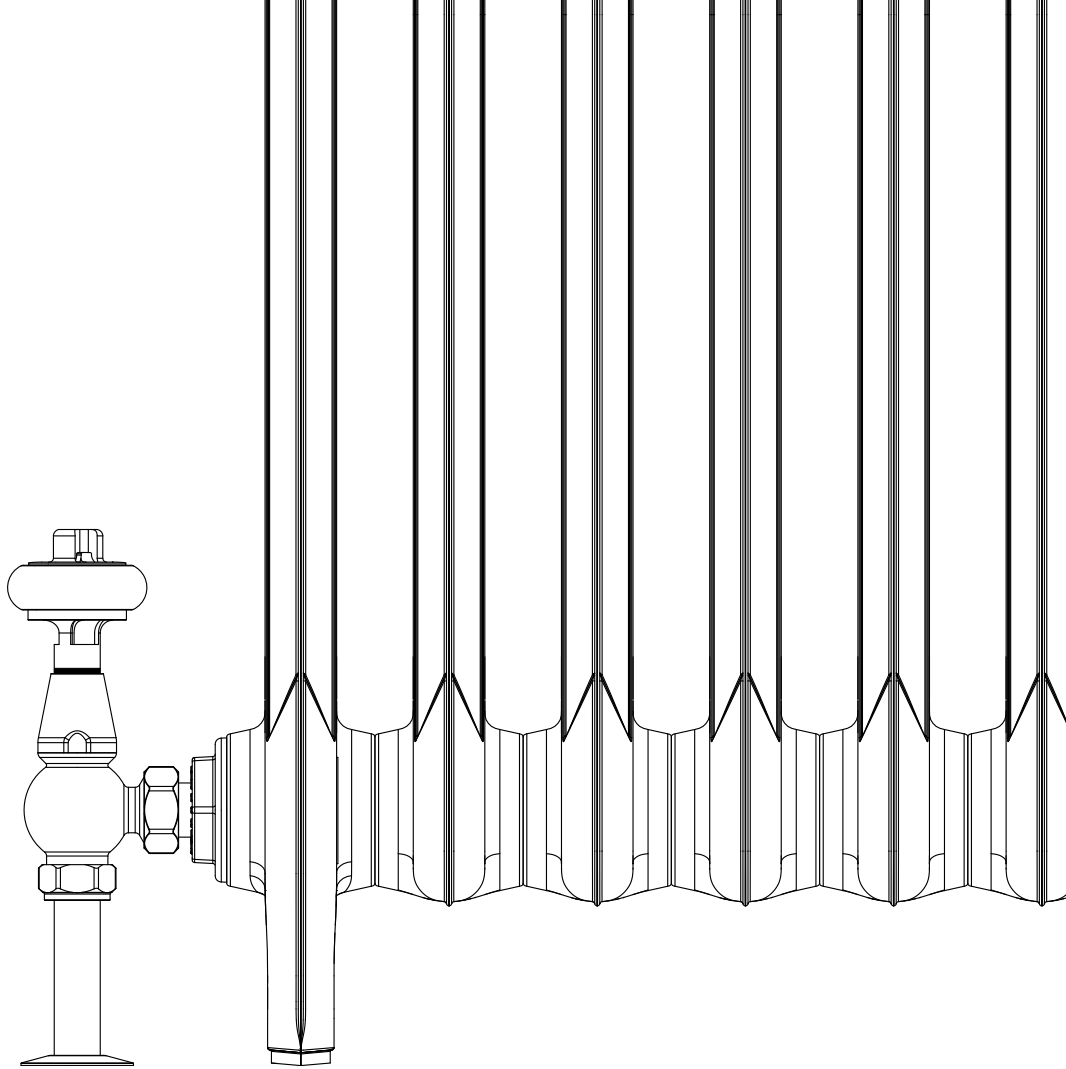


Product Brochure

Castrads®

Est. 2006

Version 100.1



ABOUT CASTRADS

A degree above

We have craftsmanship in our DNA; we strive for perfection in everything we produce. From the foundry to your home, our team of passionate consultants and proud engineers are there every step of the way.

Our radiators see the past and the present collide with enduring elegance. In new, in old, a piece of furniture for exceptional homes.

Built to last

Every aspect of our product design is handled by our talented in-house design team, allowing us to continually innovate and improve upon the high standards to which we already adhere.

And as the business is in the process of becoming ISO 9001 certified, with products that exceed international standards, we're proud to be shaping the future of quality assurance in our industry.

Made to order

With confidence in the quality of our craftsmanship, we seek to ensure the selection, delivery, and installation of your product is effortless.

We listen to our customers to help create their vision; that's why independent review sites have given Castrads an industry-leading score for customer service.



Rococo II 760mm,
10 sections in
Full Polish with
Chatsworth Satin
Nickel TRV.



Rococo III 470mm, 13 sections in Natural Pewter with Windsor Natural Brass TRV.

CAST IRON RADIATORS

Castrads bespoke radiators are built to last and finished to perfection in Manchester. Our unrivalled Ironshield Guarantee comes as standard.



Princess II 760mm, 10 sections in Burnished Copper with Windsor Polished Nickel TRV.

GRACE

Fluted cast iron column radiators with linear moulding and inclined feet. Staggered spacing between columns adds extra interest. A timeless classic.



Grace 2 Column

Available in 4 heights

89mm deep

Slimline, perfect for hallways

Grace 4 Column

Available in 5 heights

175mm deep

Wide range of heights for any space

Grace 6 Column

Available in 3 heights

250mm deep

High heat output, ideal for large rooms



Model	Section	Output		Volume	Weight	Section Length	Depth	Height
		BTUs	Watts					
Grace 2 Column 480mm	Leg	160	47	0.4L	3.0kg	60mm	89mm	480mm
	Mid	160	47	0.4L	2.6kg	60mm	89mm	440mm
Grace 2 Column 640mm	Leg	212	62	0.5L	3.8kg	60mm	89mm	640mm
	Mid	212	62	0.5L	3.4kg	60mm	89mm	580mm
Grace 2 Column 740mm	Leg	239	70	0.6L	4.2kg	60mm	89mm	740mm
	Mid	239	70	0.6L	3.8kg	60mm	89mm	680mm
Grace 2 Column 1040mm	Leg	338	99	0.8L	5.6kg	60mm	89mm	1040mm
	Mid	338	99	0.8L	5.2kg	60mm	89mm	980mm

Grace 2 Column 640mm



Grace 2 Column 640mm, 11 sections in Mid Grey Sparkle with Windsor Satin Nickel TRV.

Length - 693mm
 Height - 640mm
 Depth - 89mm
 Heat Output - 682 Watts / 2333 BTUs

Grace 2 Column 1040mm



Grace 2 Column 1040mm, 17 sections in Midnight Ink with Windsor Satin Nickel TRV.

Length - 1055mm
 Height - 1040mm
 Depth - 89mm
 Heat Output - 1683 Watts / 5757 BTUs

Model	Section	Output		Volume	Weight	Section Length	Depth	Height
		BTUs	Watts					
Grace 4 Column 360mm	Leg	147	43	0.4L	3.7kg	60mm	175mm	357mm
	Mid	147	43	0.4L	3.2kg	60mm	175mm	295mm
Grace 4 Column 480mm	Leg	279	64	0.5L	4.7kg	60mm	175mm	475mm
	Mid	279	82	0.5L	4.1kg	60mm	175mm	415mm
Grace 4 Column 660mm	Leg	314	92	0.9L	5.8kg	60mm	175mm	660mm
	Mid	314	92	0.9L	5.2kg	60mm	175mm	600mm
Grace 4 Column 760mm	Leg	365	107	1.4L	6.6kg	60mm	172mm	760mm
	Mid	365	107	1.4L	6.0kg	60mm	172mm	700mm
Grace 4 Column 960mm	Leg	467	137	1.6L	8.2kg	60mm	175mm	960mm
	Mid	467	137	1.6L	7.6kg	60mm	175mm	895mm

Grace 6 Column 485mm	Leg	324	95	0.9L	6.93kg	60mm	250mm	485mm
	Mid	324	95	0.9L	6.29kg	60mm	250mm	425mm
Grace 6 Column 660mm	Leg	450	132	1.2L	9.1kg	60mm	250mm	660mm
	Mid	450	132	1.2L	8.5kg	60mm	250mm	600mm
Grace 6 Column 960mm	Leg	662	194	1.6L	14.0kg	60mm	250mm	960mm
	Mid	662	194	1.6L	13.4kg	60mm	250mm	890mm

Grace 4 Column 760mm



Grace 4 Column 760mm, 12 sections in Mid Grey Sparkle with Windsor Satin Nickel TRV.

Length - 756mm
 Height - 760mm
 Depth - 175mm
 Heat Output - 1284 Watts / 4392 BTUs

Grace 6 Column 660mm



Grace 6 Column 660mm, 10 sections in Grey Bronze with Windsor Satin Nickel TRV.

Length - 635mm
 Height - 660mm
 Depth - 250mm
 Heat Output - 1320 Watts / 4515 BTUs



Technology and tradition collide in this modern take on the classic Princess radiator. Designed with cutting-edge technology and cast by master craftsmen in a recently-opened artisan radiator foundry in Poland. The Neptune range is one of very few radiator designs currently cast in the EU.

NEPTUNE

Modern curves and a ridged shoulder make Neptune a bold feature in contemporary interiors. Sleek feet and a striking pinched top offer an updated aesthetic to a design inspired by the classic Princess radiator. Available in four heights.



Neptune II

Available in 4 heights

210mm deep

Ideal for large rooms. Strong design with soft curves



Model	Section	Output		Volume	Weight	Section Length	Depth	Height
		BTUs	Watts					
Neptune II 520mm	Leg	293	86	2.1L	7.7kg	80mm	180mm	520mm
	Mid	293	86	2.1L	7.3kg	80mm	180mm	460mm
Neptune II 620mm	Leg	351	103	2.6L	9.3kg	80mm	180mm	620mm
	Mid	351	103	2.6L	8.9kg	80mm	180mm	560mm
Neptune II 720mm	Leg	423	124	3.0L	10.1kg	80mm	180mm	720mm
	Mid	423	124	3.0L	9.7kg	80mm	180mm	660mm
Neptune II 920mm	Leg	549	161	4.1L	12.5kg	80mm	180mm	920mm
	Mid	549	161	4.1L	12.1kg	80mm	180mm	860mm

Neptune II 520mm



Neptune II 520mm, 6 sections in Natural Pewter with Windsor Natural Pewter TRV.

Length - 510mm
 Height - 520mm
 Depth - 180mm
 Heat Output - 516 Watts / 1758 BTUs

Neptune II 620mm



Neptune II 620mm, 8 sections in Beaten Brass with Windsor Natural Brass TRV.

Length - 670mm
 Height - 620mm
 Depth - 180mm
 Heat Output - 824 Watts / 2808 BTUs

Neptune II 720mm



Neptune II 720mm, 8 sections in Aged Gold with Windsor Polished Nickel TRV.

Length - 670mm
 Height - 720mm
 Depth - 180mm
 Heat Output - 992 Watts / 3384 BTUs

Neptune II 920mm



Neptune II 920mm, 8 sections in Aged Gold with Windsor Polished Nickel TRV.

Length - 670mm
 Height - 920mm
 Depth - 180mm
 Heat Output - 1288 Watts / 4392 BTUs

PRINCESS

Elegant and strong in design. The Princess range makes an alluring statement with a utilitarian appearance. Available in six heights across two depths.



Princess I

Available in 3 heights

128mm deep

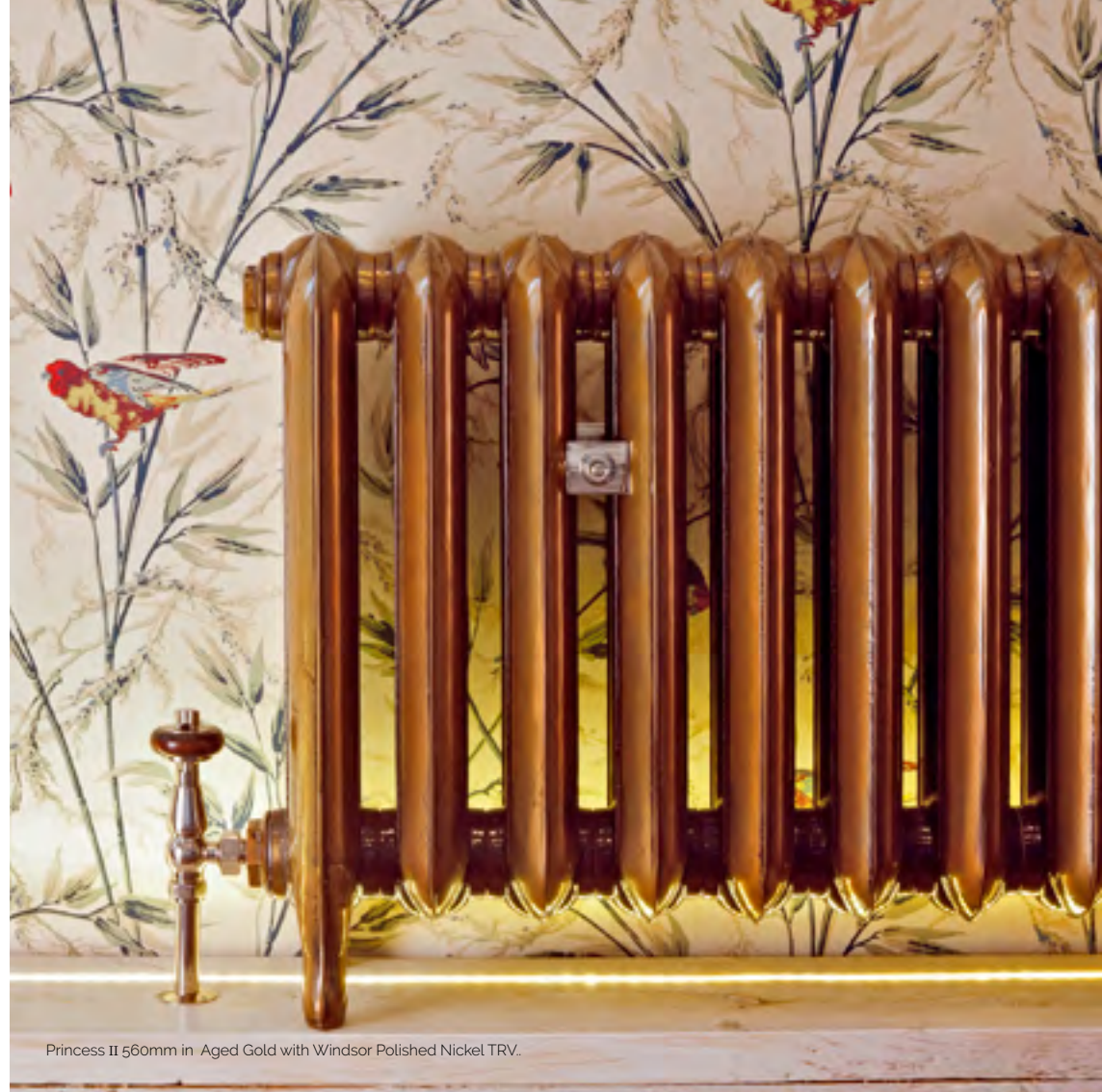
Ideal for rooms with limited space. Sleek simple curves

Princess II

Available in 3 heights

190mm & 210mm deep

A robust industrial design for medium and large rooms



Princess II 560mm in Aged Gold with Windsor Polished Nickel TRV.

Model	Section	Output		Volume	Weight	Section Length	Depth	Height
		BTUs	Watts					
Princess I 460mm	Leg	164	48	0.9L	5.4kg	75mm	128mm	455mm
	Mid	164	48	0.9L	5.0kg	75mm	128mm	395mm
Princess I 610mm	Leg	222	65	1.0L	7.6kg	75mm	128mm	600mm
	Mid	222	65	1.0L	7.3kg	75mm	128mm	550mm
Princess I 795mm	Leg	287	84	2.6L	8.5kg	75mm	128mm	790mm
	Mid	287	84	2.6L	7.9kg	75mm	128mm	740mm

Princess II 560mm	Leg	293	86	2.0L	8.1kg	78mm	210mm	560mm
	Mid	293	86	2.0L	6.5kg	78mm	210mm	485mm
Princess II 760mm	Leg	403	118	2.6L	9.9kg	79mm	210mm	760mm
	Mid	403	118	2.6L	8.5kg	79mm	210mm	685mm
Princess II 810mm	Mid	427	125	2.8L	10.2kg	79mm	190mm	810mm
	Leg	427	125	2.8L	8.5kg	79mm	190mm	730mm

Princess I 795mm



Princess I 795mm, 10 sections in Hammered Gold with Windsor Polished Brass TRV.

Length - 785mm
 Height - 795mm
 Depth - 128mm
 Heat Output - 840 Watts / 2873 BTUs

Princess II 760mm



Princess II 760mm, 9 sections in Ceramic White with Windsor Polished Nickel TRV.

Length - 738mm
 Height - 760mm
 Depth - 210mm
 Heat Output - 1062 Watts / 3633 BTUs

ROCOCO

Beautifully detailed, highly ornate cast iron radiators with an intricate floral motif and scrolled tops. Available in one, two and three column ranges.



Rococo I

Available in 3 heights

140mm deep

Perfect in hallways, smaller rooms and behind doors

Rococo II

Available in 4 heights

205mm - 220mm deep

Ideal for medium and large rooms. Largest choice of heights

Rococo III

Available in 3 heights

256mm deep

A high heat output radiator ideal for large rooms.



Model	Section	Output		Volume	Weight	Section Length	Depth	Height
		BTUs	Watts					
Rococo I 560mm	Leg	188	55	0.8L	7.8kg	75mm	140mm	560mm
	Mid	188	55	0.8L	7.4kg	75mm	140mm	500mm
Rococo I 660mm	Leg	222	65	1.0L	8.1kg	75mm	140mm	660mm
	Mid	222	65	1.0L	7.5kg	75mm	140mm	605mm
Rococo I 950mm	Leg	321	94	1.3L	12.1kg	76mm	140mm	950mm
	Mid	321	94	1.3L	11.5kg	76mm	140mm	895mm

Rococo II 510mm	Leg	266	78	1.7L	7.9kg	80mm	220mm	510mm
	Mid	266	78	1.7L	6.8kg	80mm	220mm	451mm
Rococo II 660mm	Leg	341	100	2.3L	11.8kg	76mm	205mm	660mm
	Mid	341	100	2.3L	10.6kg	76mm	205mm	595mm
Rococo II 760mm	Leg	392	115	2.4L	11.1kg	79mm	215mm	759mm
	Mid	392	115	2.4L	10.4kg	79mm	215mm	695mm
Rococo II 940mm	Leg	418	141	2.8L	16.6kg	78mm	205mm	940mm
	Mid	481	141	2.8L	16.2kg	78mm	205mm	880mm

Rococo III 470mm	Leg	324	95	1.5L	8.8kg	78mm	256mm	475mm
	Mid	324	95	1.5L	8.3kg	78mm	256mm	410mm
Rococo III 768mm	Leg	683	187	3.1L	13.0kg	77mm	256mm	768mm
	Mid	683	187	3.1L	11.6kg	77mm	256mm	710mm
Rococo III 970mm	Leg	747	219	3.5L	18.6kg	76mm	256mm	965mm
	Mid	747	219	3.5L	17.8kg	76mm	256mm	895mm

Rococo I 660mm



Rococo I 660mm, 7 sections in Matt Black with Chatsworth Black Nickel TRV.

Length - 555mm
Height - 660mm
Depth - 140mm
Heat Output - 455 Watts / 1556 BTUs

Rococo II 760mm



Rococo II 760mm, 9 sections in Charcoal with Windsor Natural Brass TRV.

Length - 742mm
Height - 759mm
Depth - 215mm
Heat Output - 1035 Watts / 3540 BTUs

Rococo III 768mm



Rococo III 8 sections in Satin Polish with Windsor Satin Nickel TRV.

Length - 646mm
Height - 768mm
Depth - 256mm
Heat Output - 1496 Watts / 5117 BTUs

TRADITIONAL COLUMN

Victorian style cast iron radiators used extensively in period properties. Two different ranges, each with linear detailing.



3 Column

Available in 3 heights

115mm - 120mm deep

Larger columns but overall a narrower radiator

4 Column

Available in 4 heights

140mm - 156mm deep

Finer columns with a higher heat output



4 Column 813mm, 18 sections in Farrow & Ball Off Black with Windsor Antique Brass Corner TRV.

Model	Section	Output		Volume	Weight	Section Length	Depth	Height
		BTUs	Watts					
3 Column 450mm	Leg	164	48	0.9L	3.8kg	61.6mm	117mm	448mm
	Mid	164	48	0.9L	2.9kg	61.6mm	117mm	385mm
3 Column 645mm	Leg	249	73	1.1L	4.6kg	62.1mm	120mm	645mm
	Mid	249	73	1.1L	4.2kg	62.1mm	120mm	572mm
3 Column 745mm	Leg	287	84	1.2L	5.7kg	62.1mm	115mm	747mm
	Mid	287	84	1.2L	5.2kg	62.1mm	115mm	675mm

4 Column 460mm	Leg	181	53	0.6L	3.4kg	61.3mm	140mm	455mm
	Mid	181	53	0.6L	2.9kg	61.3mm	140mm	378mm
4 Column 660mm	Leg	269	76	0.8L	5.0kg	61.5mm	145mm	657mm
	Mid	259	76	0.8L	4.6kg	61.5mm	145mm	575mm
4 Column 760mm	Leg	321	94	0.9L	5.9kg	61.2mm	141mm	755mm
	Mid	321	94	0.9L	5.5kg	61.2mm	141mm	677mm
4 Column 813mm	Leg	372	109	1.1L	6.4kg	60.6mm	156mm	813mm
	Mid	372	109	1.1L	6.0kg	60.6mm	156mm	725mm

3 Column 745mm



3 Column 745mm, 12 sections in Midnight Ink with Windsor Polished Brass TRV.

Length - 775mm
 Height - 745mm
 Depth - 115mm
 Heat Output - 1008 Watts / 3448 BTUs

4 Column 760mm



4 Column 760mm, 12 sections in Slate with Windsor Antique Copper TRV.

Length - 764mm
 Height - 755mm
 Depth - 141mm
 Heat Output - 1128 Watts / 3858 BTUs

LOW TRADITIONAL COLUMN

Low-level radiators perfect for bay windows or heated benches. Not just radiators but beautiful pieces of furniture.



Victorian 9 Column

340mm tall
338mm deep

Ideal for period properties. Decorative V-shape linear detailing



Churchill 7 Column

350mm tall
340mm deep

A contemporary version. Perfect for a modern conversion



Churchill 7 Column 350mm, 12 sections
in Farrow & Ball Babouche with Windsor
Satin Nickel TRV.

Model	Section	Output		Volume	Weight	Section Length	Depth	Height
		BTUs	Watts					
Churchill 7 Column 350mm	Leg	334	98	1.3L	7.2kg	63mm	340mm	350mm
	Mid	334	98	1.3L	7.0kg	63mm	340mm	320mm
Victorian 9 Column 340mm	Leg	348	102	1.2L	7.4kg	59.2mm	338mm	340mm
	Mid	348	102	1.2L	7.0kg	59.2mm	338mm	285mm

Victorian 9 Column 340mm



Victorian 9 Column 340mm, 6 sections in Mid Grey Sparkle with Windsor Satin Nickel TRV.

Length - 385mm
 Height - 340mm
 Depth - 338mm
 Heat Output - 612 Watts / 2093 BTUs

Churchill 7 Column 350mm



Churchill 7 Column 350mm, 7 sections in Soft Pewter with Windsor Satin Nickel TRV.

Length - 471mm
 Height - 350mm
 Depth - 340mm
 Heat Output - 686 Watts / 2346 BTUs

SCHOOL RADIATORS

Radiator styles traditionally used in civic spaces, schools and hospitals. Simplistically formed for an understated heating system.



Duchess

Available in 2 heights
172mm & 178mm deep
Smooth design with a simple elegant scroll on the feet



Eton

Available in 2 heights
150mm deep
Smooth structure for a modernist approach to interiors



Model	Section	Output		Volume	Weight	Section Length	Depth	Height
		BTUs	Watts					
Duchess 590mm	Leg	293	86	1.6L	8.5kg	71.2mm	178mm	592mm
	Mid	293	86	1.6L	7.1kg	71.2mm	178mm	540mm
Duchess 780mm	Leg	375	110	2L	13.5kg	71.4mm	172mm	782mm
	Mid	375	110	2L	11.0kg	71.4mm	172mm	730mm
Eton 440mm	Leg	184	54	1L	6.7kg	62.8mm	150mm	440mm
	Mid	184	54	1L	6.3kg	62.8mm	150mm	385mm
Eton 740mm	Leg	328	96	1.7L	9.4kg	65.4mm	150mm	740mm
	Mid	328	96	1.7L	8.6kg	65.4mm	150mm	665mm

Duchess 780mm



Duchess 780mm, 11 sections in Pearl Mouse Grey with Windsor Satin Nickel TRV.

Length - 815mm
 Height - 782mm
 Depth - 172mm
 Heat Output - 1210 Watts / 4139 BTUs

Eton 740mm



Eton 750mm, 12 sections in Manhattan with Windsor Satin Nickel TRV.

Length - 814mm
 Height - 740mm
 Depth - 150mm
 Heat Output - 1152 Watts / 3940 BTUs

FLORAL & ORNATE

Arts and Crafts, Celtic patterns, floral motifs and Gothic cherubs. 4 very different cast iron radiators to compliment any interior design.

Ribbon



Viscount



Cherub



Prince



Ribbon

Available in 3 heights
210mm deep
Intricate banded motif design

Cherub

803mm tall
210mm deep
Lavish Gothic motif

Viscount

Available in 2 heights
175mm deep
Arts and Crafts detailing

Prince

Available in 2 heights
140mm & 150mm deep
Elegant touch for period properties



*Viscount 595mm, 10 sections in Full Polish with Windsor Polished Nickel TRV.

Model	Section	Output		Volume	Weight	Section Length	Depth	Height
		BTUs	Watts					
Ribbon 460mm	Leg	283	83	1.6L	7.7kg	72mm	210mm	460mm
	Mid	283	83	1.6L	6.0kg	65mm	210mm	390mm
Ribbon 660mm	Leg	406	119	2L	10.3kg	71mm	210mm	660mm
	Mid	406	119	2L	9.2kg	71mm	210mm	590mm
Ribbon 760mm	Leg	444	130	2.6L	11.5kg	71mm	210mm	760mm
	Mid	444	130	2.6L	10.4kg	71mm	210mm	690mm

Viscount 595 mm	Leg	263	77	1.5L	8.1kg	67mm	175mm	597mm
	Mid	263	77	1.5L	7.9kg	67mm	175mm	530mm
Viscount 780mm	Leg	358	105	1.8L	12.2kg	65.5mm	175mm	780mm
	Mid	358	105	1.8L	10.8kg	65.5mm	175mm	725mm

Cherub 800mm	Leg	382	112	1.9L	15.9kg	66.7mm	210mm	803mm
	Mid	382	112	1.9L	13.9kg	66.7mm	210mm	735mm

Prince 580mm	Leg	232	67.9	1.4L	6.2kg	73mm	140mm	585mm
	Mid	232	67.9	1.4L	5.4kg	73mm	140mm	520mm
Prince 750mm	Leg	300	88	1.8L	7.4kg	72mm	150mm	750mm
	Mid	300	88	1.8L	6.2kg	72mm	150mm	680mm

Ribbon 760mm



Ribbon 760mm, 10 sections in Heritage White with Windsor Satin Nickel TRV.

Length - 740mm
 Height - 760mm
 Depth - 210mm
 Heat Output - 1300 Watts / 4447 BTUs

Cherub 800mm



Cherub 800mm, 12 sections in Pewter with Windsor Satin Nickel TRV.

Length - 830mm
 Height - 803mm
 Depth - 210mm
 Heat Output - 1344 Watts / 4597 BTUs

Viscount 780mm



Viscount 780mm, 12 sections in Oatmeal with Windsor Polished Nickel TRV.

Length - 816mm
 Height - 780mm
 Depth - 175mm
 Heat Output - 1260 Watts / 4310 BTUs

Prince 750mm



Prince 750mm, 10 sections in Matt Black with Windsor Satin Nickel TRV.

Length - 750mm
 Height - 750mm
 Depth - 150mm
 Heat Output - 880 Watts / 3010 BTUs



6 Column radiator finished in Bronze Vedigris.

STEEL COLUMN RADIATORS

A space saving economical phenomenon. Many shapes and sizes to suit that restricted space. Call our sales team to help you find the perfect fit.



Verona 1800mm in Signal White with Windsor Satin Nickel Corner TRV.

FLORENCE

Perfect for all interiors, with a large range of heights and depths with high heat outputs. Wall-hung or floor-mounted with various colour options.



Florence 2 Column

Available in 11 sizes

66mm deep

Space saving shallow radiator

Next day delivery available

Florence 3 Column

Available in 13 sizes

107mm deep

The standard choice

Next day delivery available

Florence 4 Column

Available in 16 sizes

148mm deep

Wide selection of heights including very low models

Next day delivery available



Model	Output		Weight	Length	Depth	Height
	BTUs	Watts				
Florence 2 Column 570, 715mm	2167	635	14kg	715mm	66mm	570mm
Florence 2 Column 570, 944mm	2934	860	18kg	944mm	66mm	570mm
Florence 2 Column 570, 1220mm	3755	1100	23kg	1220mm	66mm	570mm
Florence 2 Column 670, 715mm	2518	738	15kg	715mm	66mm	670mm
Florence 2 Column 670, 944mm	3441	1000	21kg	944mm	66mm	670mm
Florence 2 Column 670, 1220mm	4365	1279	26kg	1220mm	66mm	670mm
Florence 2 Column 1200, 485mm	2618	768	18kg	485mm	66mm	1200mm
Florence 2 Column 1200, 670mm	3673	1076	25kg	670mm	66mm	1200mm
Florence 2 Column 1800, 305mm	2348	688	16kg	305mm	66mm	1800mm
Florence 2 Column 1800, 485mm	3915	1147	26kg	485mm	66mm	1800mm
Florence 2 Column 1800, 670mm	5479	1606	36kg	670mm	66mm	1800mm



Florence 2 column 570mm, 715mm in Signal White with Windsor Polished Nickel TRV.

Length - 715mm
 Height - 570mm
 Depth - 66mm
 Heat Output - 635 Watts / 2165 BTUs

Model	Output		Weight	Length	Depth	Height
	BTUs	Watts				
Florence 3 Column 570, 350mm	1364	400	9kg	350mm	107mm	570mm
Florence 3 Column 570, 715mm	2665	781	20kg	715mm	107mm	570mm
Florence 3 Column 570, 944mm	3957	1160	26kg	944mm	107mm	570mm
Florence 3 Column 570, 1225mm	4621	1354	34kg	1225mm	107mm	565mm
Florence 3 Column 670, 350mm	1575	462	11kg	350mm	107mm	670mm
Florence 3 Column 670, 715mm	3374	989	23kg	715mm	107mm	670mm
Florence 3 Column 670, 944mm	4570	1339	32kg	944mm	107mm	670mm
Florence 3 Column 670, 1225mm	5849	1714	39kg	1225mm	107mm	670mm
Florence 3 Column 1200, 485mm	3555	1042	27kg	485mm	107mm	1200mm
Florence 3 Column 1200, 670mm	4977	1459	38kg	670mm	107mm	1200mm
Florence 3 Column 1800, 305mm	3192	936	24kg	305mm	107mm	1800mm
Florence 3 Column 1800, 485mm	5320	1559	40kg	485mm	107mm	1800mm
Florence 3 Column 1800, 670mm	7448	2183	56kg	670mm	107mm	1800mm



Florence 3 Column 670mm, 350mm in Signal White with Windsor Polished Nickel TRV.

Length - 350mm
 Height - 670mm
 Depth - 107mm
 Heat Output - 461 Watts / 1572 BTUs

Model	Output		Weight	Length	Depth	Height
	BTUs	Watts				
Florence 4 Column 300, 350mm	986	289	6kg	350mm	148mm	300mm
Florence 4 Column 300, 715mm	2116	620	14kg	715mm	148mm	715mm
Florence 4 Column 300, 1225mm	3667	1075	23kg	1225mm	148mm	300mm
Florence 4 Column 400, 350mm	1316	386	8kg	350mm	148mm	400mm
Florence 4 Column 400, 715mm	2819	826	18kg	715mm	148mm	400mm
Florence 4 Column 400, 1225mm	4890	1433	31kg	1225mm	148mm	400mm
Florence 4 Column 570, 346mm	1839	539	13kg	346mm	139mm	570mm
Florence 4 Column 570, 714mm	3939	1154	27kg	714mm	139mm	570mm
Florence 4 Column 570, 944mm	5252	1539	36kg	944mm	139mm	570mm
Florence 4 Column 570, 1220mm	6830	2002	47kg	1220mm	139mm	570mm
Florence 4 Column 670, 350mm	2148	629	14kg	350mm	139mm	670mm
Florence 4 Column 670, 714mm	41605	1350	30kg	714mm	139mm	670mm
Florence 4 Column 670, 944mm	5320	1559	40kg	485mm	139mm	1800mm
Florence 4 Column 670, 1220mm	7981	2339	52kg	1220mm	139mm	670mm
Florence 4 Column 1800, 305mm	4271	1252	32kg	305mm	148mm	1800mm
Florence 4 Column 1800, 575mm	8543	2504	64kg	575mm	148mm	1800mm



Florence 4 Column 300mm, 715mm in Signal White with Windsor Polished Nickel TRV.

Length - 715mm
 Height - 300mm
 Depth - 148mm
 Heat Output - 620 Watts / 22114 BTUs

VERONA

Our most shallow steel radiator. Suitable where space is a premium. Simple and contemporary.

Verona 1200mm

Model	Output		Weight	Length	Depth	Height
	BTUs	Watts				
Verona 1200mm	2518	738	9kg	358mm	58mm	1200mm
Verona 1500mm	2494	731	10kg	252mm	58mm	1500mm
Verona 1800mm	1927	565	10kg	310mm	58mm	1800mm



Verona 1200mm in Signal White with Windsor Polished Nickel TRV.

Length - 358mm
Height - 1200mm
Depth - 58mm
Heat Output - 738 Watts / 2516 BTUs



Florence 3 Column
1800mm, 305mm in
Manhattan with Niva
Satin Nickel TRV.

BATHROOM RADIATORS

Our towel radiators are the perfect heating solution for bathrooms. Available for next day delivery and covered by our ten-year Ironshield Guarantee. Team these up with a pair of valves and base plates for a seamless finish.



KORA

Exquisite wall-mounted electric towel warmers expertly built from highly-polished stainless steel. Made in Europe to ISO 9001 and EN442.



Kora

Available in 2 heights

145mm deep

Perfect for en-suites

Next day delivery available

Model	Output		Weight	Width	Depth	Height
	BTUs	Watts				
Kora 4 Polished Brass	399	117	6.5kg	520mm	145mm	585mm
Kora 4 Polished Steel	399	117	6.5kg	520mm	145mm	585mm
Kora 5 Polished Brass	499	147	7.5kg	520mm	145mm	685mm
Kora 5 Polished Steel	499	147	7.5kg	520mm	145mm	685mm



Kora 4 Polished Steel wall mounted towel radiator.

Width - 715mm
 Height - 585mm
 Depth - 145mm
 Heat Output - 117 Watts / 399 BTUs

VIVIEN

Bathroom radiators with either a projected or shallow towel bar. Column radiator inserts with chrome frame. European-made and covered by our Ironshield Guarantee.



Vivien Shallow

Available in 3 widths

135mm deep

Space saving shallow design

Next day delivery available



Vivien

Available in 3 widths

225mm deep

Traditional deep towel warmer

Next day delivery available

Vivien 6

1 size only

225 deep

2 horizontal towel bars

Next day delivery available

Vivien 8 Wall Mounted

1 size only

150mm deep

2 raised towel bars perfect for en-suites

Next day delivery available



Vivien 5 towel radiator.

Model	Output		Weight	Width	Depth	Height
	BTUs	Watts				
Vivien 5 Shallow Profile	1904	558	13.6kg	500mm	135mm	952mm
Vivien 5	1918	562	13.6kg	500mm	225mm	952mm
Vivien 6	3238	950	25kg	576mm	225mm	1500mm
Vivien 8 Shallow Profile Wall Mounted	1808	530	19.6kg	675mm	150mm	825mm
Vivien 8 Shallow Profile	2503	734	19.1kg	675mm	135mm	952mm
Vivien 8	2519	739	19.1kg	675mm	225mm	952mm
Vivien 11 Shallow Profile	2985	876	22.6kg	800mm	135mm	952mm
Vivien 11	2999	879	22.6kg	800mm	225mm	952mm



Vivien 8 towel radiator with Niva Chrome TRV.

Width - 675mm
 Height - 952mm
 Depth - 225mm
 Heat Output - 739 Watts / 2519 BTUs



Vivien 6 towel radiator with Niva Chrome TRV.

Width - 576mm
 Height - 1500mm
 Depth - 225mm
 Heat Output - 950 Watts / 3238 BTUs



Vivien 8 Wall Mounted with Chrome Angled Crosshead valves

Width - 675mm
 Height - 825mm
 Depth - 150mm
 Heat Output - 530 Watts / 1808 BTUs

ELARA

Traditional wall-mounted towel warmers. Perfect for en-suites, saving on space with a classic design. Made in Europe with our ten-year Ironshield Guarantee.



Elara

Available in 3 heights

135mm deep

Period design suitable for en-suites

Next day delivery available

Model	Output		Weight	Width	Depth	Height
	BTUs	Watts				
Elara 2 Shallow Profile Wall Mounted	250	73	2.2kg	498mm	135mm	299mm
Elara 3 Shallow Profile Wall Mounted	394	116	3.9kg	498mm	135mm	524mm
Elara 4 Shallow Profile Wall Mounted	541	159	6.5kg	498mm	135mm	748mm



Elara 3 Shallow Profile Wall Mounted towel radiator with Chrome Angled Crosshead valves.

Width - 350mm
 Height - 524mm
 Depth - 135mm
 Heat Output - 116 Watts / 394 BTUs

TITANIA

Chrome-plated Art Deco style bathroom radiator. Shallow profile with plenty of towel warming potential.



Titania

Available in 1 height only

125mm deep

7 towel bars for complete storage

Next day delivery available

Model	Output		Weight	Width	Depth	Height
	BTUs	Watts				
Titania	1569	460	10.65kg	600mm	125mm	1200mm



Titania chrome plated towel radiator with Chrome Angled Crosshead valves.

Width - 500mm
 Height - 1200mm
 Depth - 125mm
 Heat Output - 460 Watts / 1569 BTUs

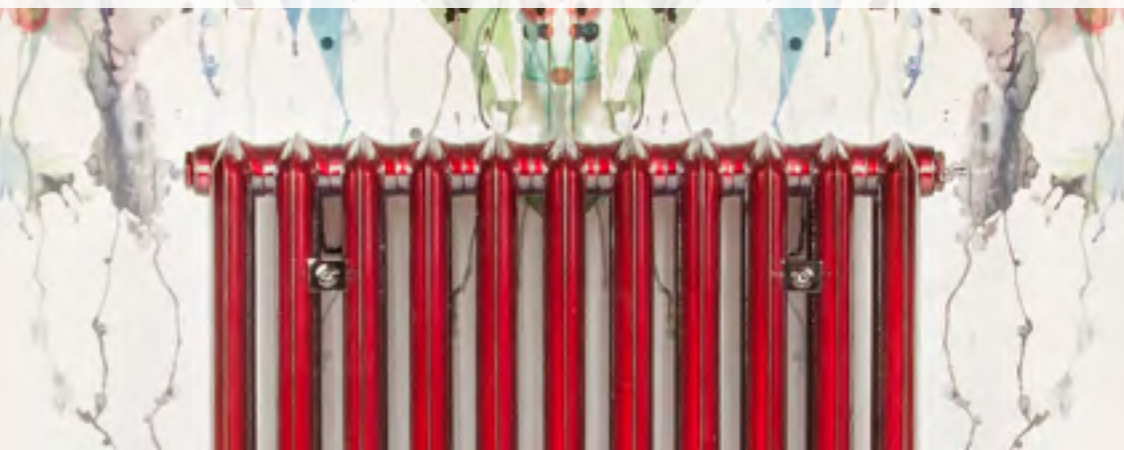


Kora 5 Polished Brass
Electric Towel Radiator.



COLOURS & FINISHES

Choose from our unrivalled Bare Metal finishes for an exquisite look. Our signature range is hard wearing and carefully selected for cast iron radiators, or match your interiors with genuine Farrow & Ball® or Little Greene® paints. Can't see the finish you want? Just get in touch.



BARE METAL



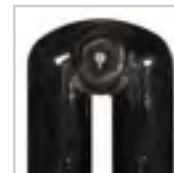
Aged Copper



Aged Gold



Beaten Brass



Black Nickel



Bronze



Burnished Copper



Etch-coated Polish



Full Polish



Highlight Polish



Full Polish



Natural Brass



Natural Pewter



Ox Blood



Purple Rain



Sapphire Blue



Satin Polish



Wimbledon Green

Our bare metal finishes require specialist skills and craftsmanship. Please allow 4-6 weeks lead time.



4 Column 813mm, 18 sections in Farrow & Ball® Off Black with Windsor Antique Brass Corner TRV..

SIGNATURE



Manhattan



Antique White



Ashen White



Bright White



Bronze Gold



Ceramic White



Chalk



Slate



Dark Grey Sparkle



Fossil



Grey Bronze



Charcoal



Soft Pewter



Mid Grey Sparkle



Midnight Ink



Minster White



Oatmeal



Old Penny



Matt Black



Pewter

PRESTIGIOUS PAINTS

We paint our radiators using genuine branded paints under license from the manufacturers.



FARROW & BALL
CRAFTSMEN IN PAINT AND PAPER

Little Greene
— PAINT & PAPER 1775 —

ARTISTIC & CRAFTED



Heritage White



Rose Gold



Antique Copper
Powder Coat



Antique Gold
Powder Coat



Antique Silver
Powder Coat



Bronze Verdigris



Crackle Finish No1
Leather



Crackle Finish No2
Marble



Crackle Finish No3
Marble



Crackle Finish No4
Stone



Crackle Finish No5
Serpentine



Crackle Finish No6
Ashes



Princess I 460mm
in Beaten Brass
with Windsor
Natural Brass
Manual valves.

RADIATOR VALVES

Our precision-engineered valves assure modern efficiency in a range of contemporary, classic and traditional styles. The natural choice for any design-conscious radiator installation.



Rococo II 660mm, in Etch-coated Polish with Windsor Satin Nickel TRV

WINDSOR

Forged from solid brass, available in nine finishes and topped with an inimitable hardwood handle. Windsor is the valve of choice for cast iron and steel column radiators. Available in corner as well as angled fittings and both thermostatic and manual versions. There's a Windsor valve for every installation. Perfectly complementing our Column and Grace ranges of radiators.



Windsor

Available as manual or thermostatic

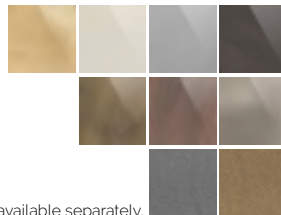
Five-year Ironshield Guarantee

Lockshield and valve set

Next day delivery available

Corner or angled options

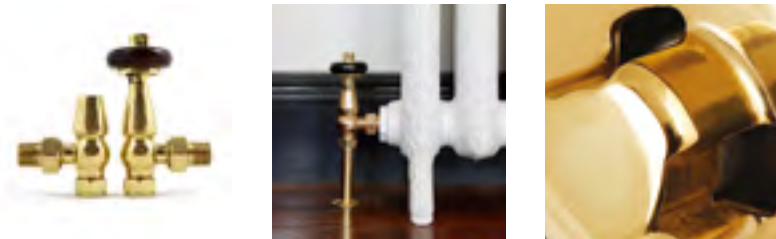
Available in 9 different metal finishes



Matching shrouds and base plates for all 9 finishes are available separately.

WINDSOR TRV

Windsor Polished Brass TRV



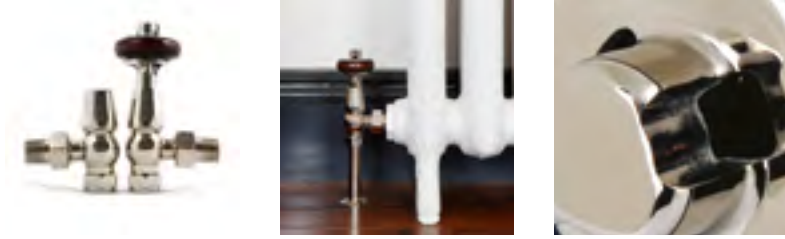
Windsor Chrome TRV



Windsor Antique Brass TRV



Windsor Polished Nickel TRV



Windsor Natural Brass TRV



Windsor Satin Nickel TRV



Windsor Antique Copper TRV



Windsor Black Nickel TRV



Windsor Natural Pewter TRV



Windsor Antique Copper Manual



WINDSOR MANUAL

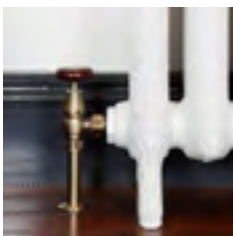
Windsor Polished Brass Manual



Windsor Chrome Manual



Windsor Antique Brass Manual



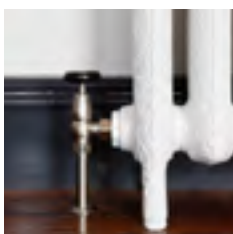
Windsor Polished Nickel Manual



Windsor Natural Brass Manual



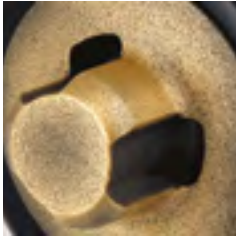
Windsor Satin Nickel Manual



Windsor Black Nickel Manual



Windsor Natural Brass Corner TRV



Windsor Natural Pewter Manual



Windsor Antique Copper Corner TRV



WINDSOR CORNER TRV

Windsor Polished Brass Corner TRV



Windsor Chrome Corner TRV



Windsor Antique Brass Corner TRV



Windsor Polished Nickel Corner TRV



Windsor Satin Nickel Corner TRV



Windsor Black Nickel Corner TRV



Windsor Natural Pewter Corner TRV



4 Column 760mm, in Charcoal with Windsor Antique Brass TRV.

CHATSWORTH

Made from solid brass with embellished detailing around the handle and valve tops. Chatsworth valves perfectly complement ornate radiators. An ideal partner for decorative radiators and adds interest to simpler radiators.



Chatsworth

Available as manual or thermostatic

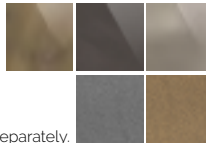
Five-year Ironshield Guarantee

Lockshield and valve set

Next day delivery available

Perfectly complements ornate radiators

Available in 5 different metal finishes



CHATSWORTH TRV

Chatsworth Antique Brass TRV



Chatsworth Natural Brass TRV



Chatsworth Satin Nickel TRV

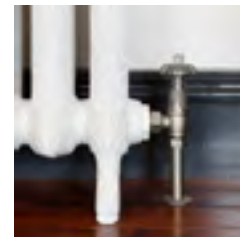


Chatsworth Black Nickel TRV



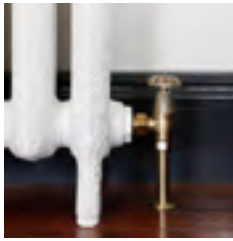
Rococo III 470mm in Chalk with Chatsworth Satin Nickel TRV.

Chatsworth Natural Pewter TRV



CHATSWORTH MANUAL

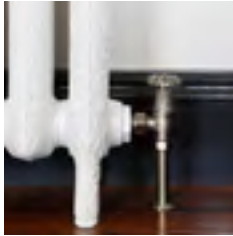
Chatsworth Antique Brass Manual



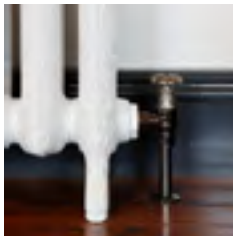
Chatsworth Natural Brass Manual



Chatsworth Satin Nickel Manual

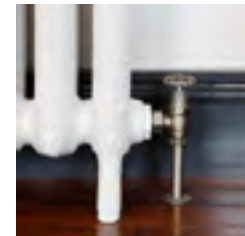


Chatsworth Black Nickel Manual



Cherub 800mm in Beaten Brass with Chatsworth Natural Brass Manual.

Chatsworth Natural Pewter Manual



NIVA

Contemporary but classic, the Niva range provides a modern and distinctive touch to any radiator. Energy-efficient thermostatic operation.

If you plan to use smart radiator valves, the Niva range is the ideal choice. Simply unscrew the thermostatic head and screw on the replacement smart valve. Our favourites are the Genius Hub™ system, but Niva is compatible with all major brands.



Niva

Available as angled and corner fittings

Five-year Ironshield Guarantee

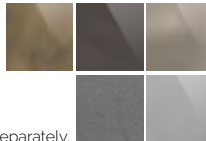
Lockshield and thermostatic valve set

Next day delivery available

Perfectly complimenting steel, bathroom radiators and cast iron column radiators



Available in 5 different metal finishes



NIVA ANGLED

Niva Chrome TRV



Niva Antique Brass TRV



Niva Satin Nickel TRV



Niva Black Nickel TRV



Niva Natural Pewter TRV



NIVA CORNER

Niva Antique Brass Corner TRV



Niva Chrome Corner TRV



Niva Polished Nickel Corner TRV



Niva Black Nickel Corner TRV



Niva Natural Pewter Corner TRV



CROSSHEADS

Engineered from solid brass and finished in three choices of plating. A pair of manual crosshead valves that will fit not only our cast iron radiators but also towel rails and more contemporary radiators too. Manufactured to British Standard EN215 exclusively for Castrads. Five-year Ironshield Guarantee as standard.



Crossheads

Manual angled valve

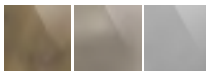
Five-year Ironshield Guarantee

Identical valve pair

Next day delivery available

Versatile model that complements all radiator styles

Available in 3 different metal finishes



Matching shrouds and base plates for all 3 finishes are available separately.

CROSSHEADS

Antique Brass Angled Crossheads



Chrome Angled Crossheads



Satin Nickel Angled Crossheads



Rococo II 760mm,
5 sections in
Ceramic White
with Antique Brass
Crosshead valves.

BLENHEIM

A timeless design. Brass manual radiator valves with black bakelite-style handle. Half-inch BSP threaded radiator connection, optional 15mm or half-inch BSP connection to pipe (both are included). Manufactured to British Standard EN215.



Blenheim

Manual angled valve

Five-year Ironshield Guarantee

Valve and lockshield pair

Next day delivery available

Classic design that complements cast iron and steel column radiators

Available in 3 different metal finishes



BLENHEIM

Blenheim Brass



Blenheim Polished Nickel



Blenheim Satin Nickel



Rococo II 760mm,
5 sections in
Ceramic White
with Blenheim
Satin Nickel valves.

SHROUDS & BASE PLATES



Polished Brass



Antique Brass



Chrome



Satin Nickel



Natural Brass



Polished Nickel



Antique Copper



Black Nickel



Natural Pewter

WALL STAYS



Polished Brass



Antique Brass



Chrome



Natural Brass



Black Nickel



Polished Nickel



Antique Copper



Natural Pewter



Satin Nickel



4 Column 813mm,
9 sections in
Manhattan with
Renaissance
Lever Handle
(Type A1) valves.



AT HOME CONSULTATIONS

If you live within an hour's travel time of one of our showrooms then we can pop round for a visit and help advise you on the ins and outs of selecting, ordering, and installing one of our cast iron radiators.



We can carry out heat loss calculations to make sure your new radiator is able to effectively and efficiently heat your property.



We can advise on the best size and placement of your new radiator.



We can advise on the design and finish that best complements your property's existing aesthetic.



After your consultation is complete you'll receive a £100 gift card to spend at Castrads

If you'd like to book an at home consultation with one of our friendly heating experts, get in touch to arrange a time that is convenient for you.

0161 439 9350 | info@castrads.com



CASTRADS - A DEGREE ABOVE

We know your cast iron radiator is an investment and it should work from the moment it is installed.

We Guarantee, No Questions Asked

That's why we take the utmost care to deliver a product that will heat your home and exceed your expectations. With supreme confidence in the quality of our craftsmanship, we seek to ensure the selection, delivery, and installation of your product is effortless on your part.

However, if something does go wrong with your product, our Ironshield Guarantee means that we'll do everything we can to get you back up and running as quickly as possible.

We won't ask you about water pH levels before we do. We won't ask you to flush your central heating system with chemicals first. We will just fix it. If our engineer can't fix it, we'll arrange a replacement.

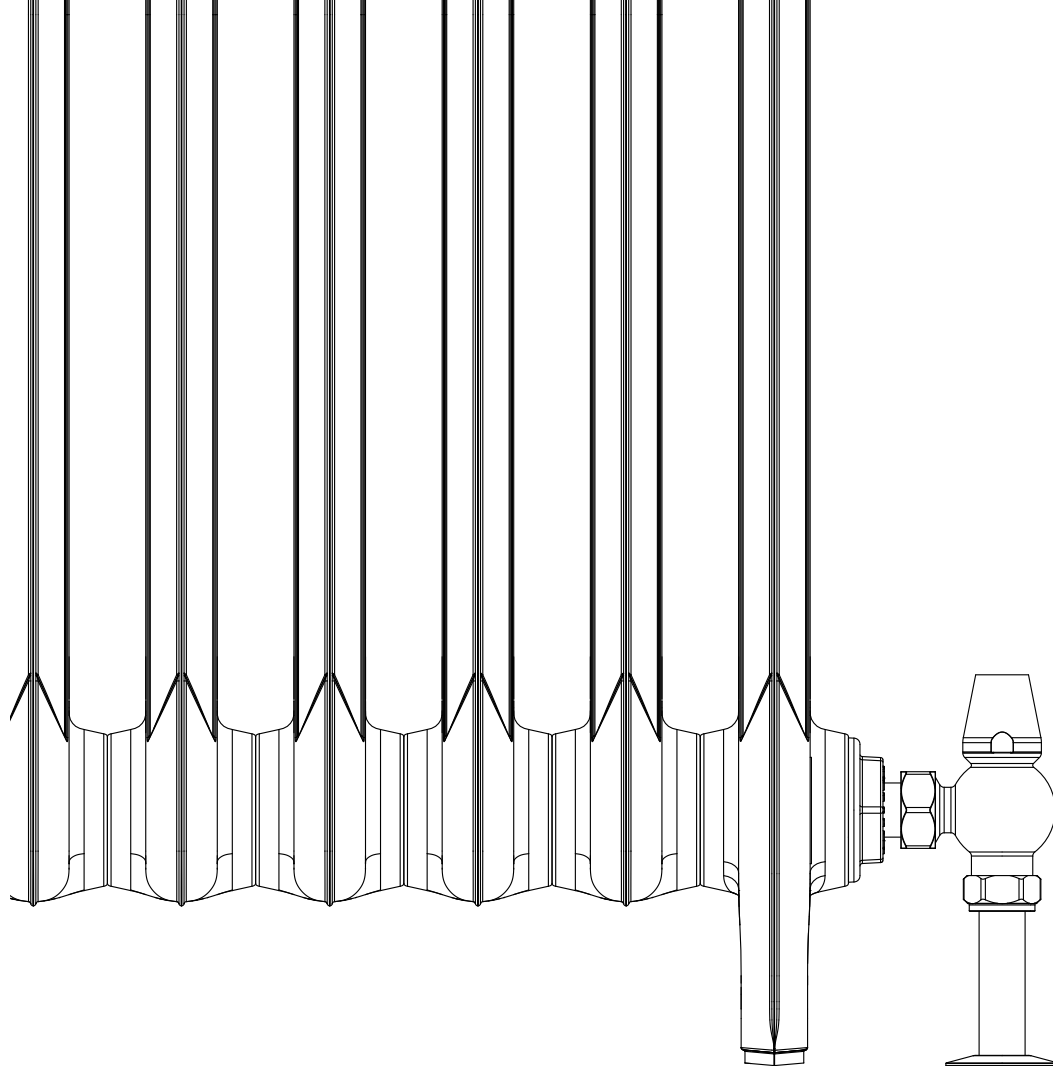
Castrads®

Est. 2006



Castrads Ltd
1 Kenwood Road
Stockport SK5 6PH
United Kingdom

+44 (0) 161 439 9350
www.castrads.com





Castrads Ltd
1 Kenwood Road
Stockport SK5 6PH
United Kingdom

+44 (0) 161 439 9350
www.castrads.com